

S-5!®

The Right Way!

Installation Instructions

Stop! Has your ColorGard® system been designed properly with the assistance of a distributor or the online ColorGard calculator? If not, see our Calculator and Load Table at www.S-5.com, or ask your distributor!

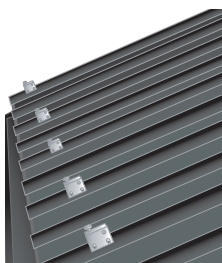
Notice to S-5!® users: specific layout and assembly schematics for S-5! products are the responsibility of the user or project designer. Due to the many variables involved with specific panel products, climates, snow melt phenomena and job particulars, **the manufacturer cannot and does not express any opinions as to the suitability of any S-5! assembly for any specific application and assumes no liability with respect thereto.** S-5! clamps are tested for ultimate holding strength on various seam types and materials. This information is available from the S-5! website: www.S-5.com. This document is an installation guide only and the photographs and drawings herein are for the purpose of illustrating installation tools and techniques, not system designs. Clamp spacing should never exceed 32" with standard products (Contact your distributor for products to accommodate a seam spacing greater than 32").

Tools Needed

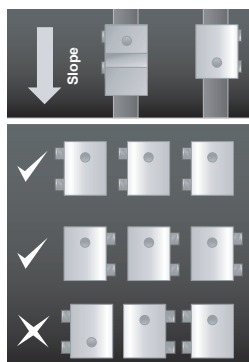
- Electric Screwgun
- Box end wrench, 1/2" drive impact wrench, or Ratchet
- Saw to cut ColorGard® crossmember
- Tin Snips
- String Line
- Torque Wrench
- Pliers or Vice Grip Pliers

1. Before You Start

First, use a string line across the top of the panel seams at the desired location to establish a true line for installation of the S-5! clamps. Individually measuring from the eave to determine each clamp location is not recommended.



2. Preparing The Clamps



If the ColorGard assembly utilizes the VersaClip for attachment of the ColorGard crossmember, the bolt hole in the clamp should be at the upslope end of the clamp. If the assembly uses punched ColorGard without VersaClip the hole should be at the downslope end of the clamp. When using the S-5-U, determine which side of the clamp to load the setscrews into, and thread the setscrews into all clamps, being careful that the bolt hole will be in the correct (upslope

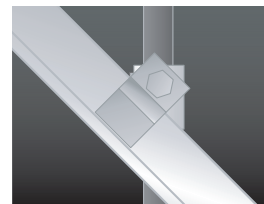
or downslope) orientation, with the setscrews on the correct side of the seam. **Both setscrews must be on the same side of the clamp.**

3. Installing The Clamps

S-5! clamps are installed differently depending upon clamp model and seam style. Please see the installation instructions included with your clamps. For maximum holding strength, setscrews should be tensioned and re-tensioned as the seam material compresses. Screw tension should be verified using a calibrated torque wrench between 160 and 180 inch pounds when used on 22ga steel and between 130 and 150 inch pounds for all other metals and thinner gauges of steel. Please visit our load table at www.S-5.com to determine the proper screw tensions and holding strength.

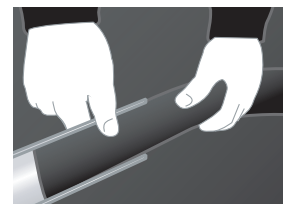
Using VersaClip™

When seam spacing is not divisible by 4" (e.g. 12", 16", 24") or when panels are not laid up true-to-dimension, or when ColorGard is installed askew to the panel seams (e.g. parallel with the line of a valley) the VersaClip facilitates installation. The VersaClips are inserted into the ColorGard prior to placement of ColorGard on the clamps. Align clips with S-5! clamp. VersaClip can be used with punched or unpunched ColorGard.



4. Installing The ColorGard®

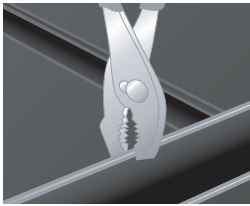
To maintain color conformity over time, color strips should be sheared from the same pre-finished metal as the roof panels. Shear strips to exactly 2" wide (8' or 10' long). Slide the color strip into the ColorGard crossmember as shown (right). If the strip length is 8', it may be



Attach anything to standing seam metal roofs without piercing the panel!

888-825-3432

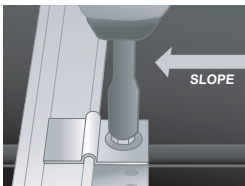
www.S-5.com



pre-assembled into the ColorGuard crossmember. If the strip is 10' long it will be assembled to the ColorGuard as installation progresses. Joints in the ColorGuard should be concealed by offsetting the joints of the color strip from the

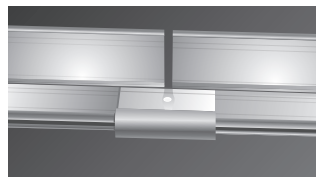
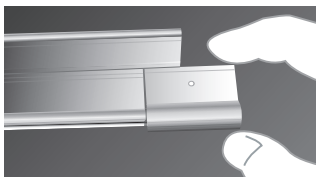
joints of the ColorGuard. The joints of the color strips can be overlapped about 1/2" if desired. Each color strip should be secured to the ColorGuard somewhere along its length. This is done by pinching the retainer lip of the ColorGuard with an ordinary pair of pliers. It can be done at one end of the ColorGuard section or anywhere along its length to prevent lateral migration of the color strip.

5. Bolt ColorGuard® to clamps

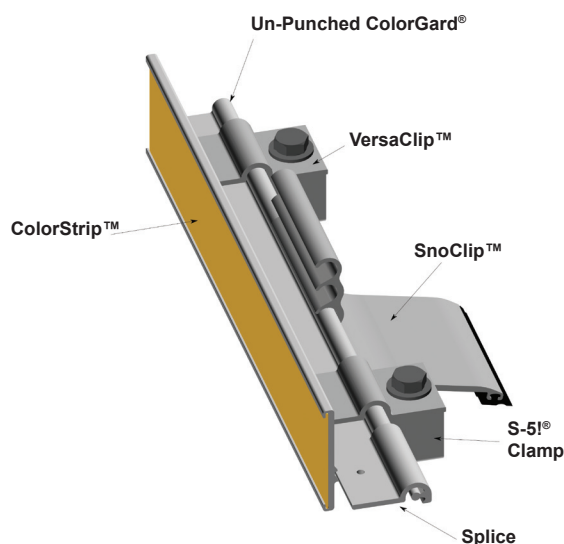


Attach ColorGuard to clamps with stainless bolts and washers provided. Bolts can be tightened with a 9/16" (17 mm) box-end wrench, or ratchet. On larger jobs a 1/2" drive electric impact will expedite this work. Tension bolts to a minimum of 20 ft. lbs.

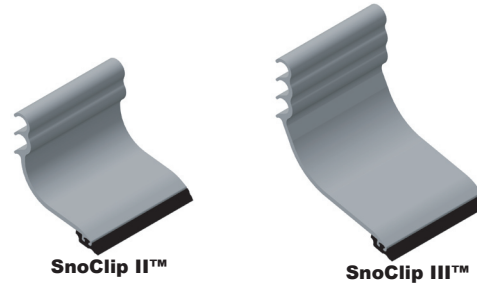
(27 Nm) Add splice pieces at each ColorGuard joint as shown below. The "dimple" in the splice piece will automatically provide a 1/8" space between adjoining sections to allow for linear thermal expansion of the ColorGuard. Trim ColorGuard at the end of the assembly, being sure it does not cantilever more than 4" beyond clamp. Any trimmed piece of ColorGuard must be attached with at least two clamps.



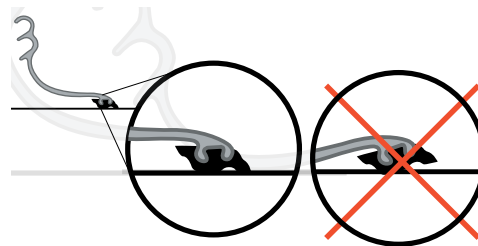
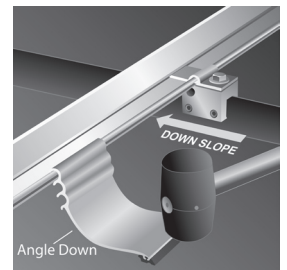
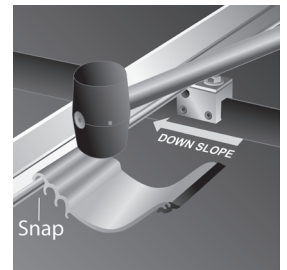
ColorGuard cutting tip: If it is necessary to field cut ColorGuard, such as at the end of an assembly, it can be done with a hack saw, or electric reciprocating saw with a fine-tooth metal cutting blade. A power mitre saw with a fine tooth carbide tip blade also works well.



Using SnoClip™



SnoClip II™ or SnoClip III™ can be added to the assembly using a mallet, pliers, or Channel-Locks. One clip is used between seams (in rare cases two clips may be desired, see www.S-5.com for details). Mount the SnoClip to the back of the ColorGuard using the lock that results with the rubber "foot" resting properly on the panel surface. When applying downward pressure on the part, the "toe" should engage the surface of the panel just before the "heel." Periodic maintenance over time may be necessary to ensure that the SnoClips maintain the appropriate positioning, as snow weight may sometimes flip the clip up slightly.



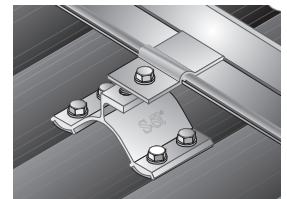
Using VersaBracket™

1. Install the bracket. See installation instructions that were included with your bracket.
2. Fasten unpunched ColorGuard to the top flange of the bracket using a 1/4" - 14 self-drilling screw.



Using CorruBracket™

1. Install the bracket. See installation instructions that were included with your bracket.
2. Fasten ColorGuard to the bracket in the same fashion as step 5.



These instructions are for use by those experienced in the craft. Always follow appropriate safety precautions and use appropriate tools.