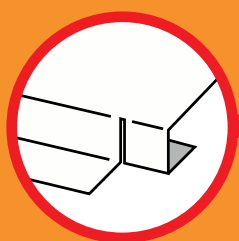


DEKS

A Skellerup Industries Company

For flashings on tile and slate roofs
Dektite® Aluminium™








Just cut and turn the tabs under the tile at the base of the Dektite® Aluminium™ for stability. Trim to fit as required.



99.9% pure aluminium base – a safe flashing solution

This Australian made product won't stain or corrode spouting and gutters. The base is 99.9% pure grade aluminium - strong, malleable and much easier to install than a lead collar, and much safer too.

CHECK THE BENEFITS!

-  Environmentally friendly
Safe alternative when drinking water is important
-  Wont stain or corrode spouting and gutters
The aluminium base reduces risk of leaching onto roofs and into gutters
-  Easy Installation
Just fix it and tab it under the tile
-  Paint to match any roof
Paint after applying any standard polyester etched primer
-  Twenty year warranty
Through robust testing we confidently apply a 20 year warranty to all our roof flashing products



FS 52067
QUALITY ISO9001
AS/NZS 4347

www.deks.com.au

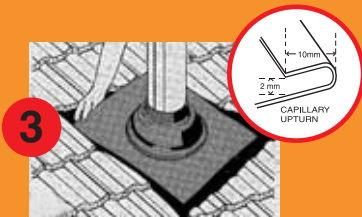
Installation Instructions



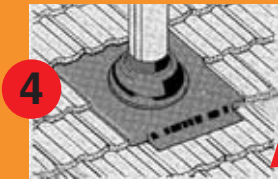
Trim Dektite® cone to suit pipe size using sharp tin snips.



After lubricating the flue with water, slide Dektite® Aluminium™ down to the tile level.



Place upper edge of base under tiles, forming an anti-capillary fold.



Cut tabs and then just press and tab the bottom corners to form a soaker run-off tray.

Important
Cut tabs and turn them under the tile at the base of the Dektite® Aluminium™ for stability. Trim to fit as required.



EASY SELECTION GUIDE

Code No	Pipe External	Base size mm	Pitch	
SDAMINI	0-35	0 - 3/8"	500 X 600	0-45° OR 12/12
SDA100	12-70MM	1/2 - 2 3/4"	500 X 600	0-45° OR 12/12
SDA101	50-170MM	2 - 6 3/4"	500 X 600	0-45° OR 12/12
SDA102	110-200MM	4 1/2 - 8"	600 X 600	0-45° OR 12/12
SDA103	160-300MM	6 1/4 - 11 3/4"	764 X 764	0-45° OR 12/12
SDA104	300-450MM	12 – 17"	956 X 956	0-45° OR 12/12

Available in Black EPDM
E.P.D.M. Withstands temperatures from -50° C to 115° C & up to 150° C intermittently.
E.P.D.M. Withstands temperatures from -58°F to 239°F, & up to 302°F intermittently.

EPDM - Perfect for approved flues!

Dektite® EPDM polymer flashings have been officially tested by the Coal Corporation of Victoria, Australia and conform to all Australian and UK Standards on approved flue systems. Under no circumstances should any polymer flashing be installed on a non approved flue or an 'active' combustion heater flue.

Look At This Performance

ASTM Method	Test Description	Specification Requirements	Test Results Black EPDM Dektite®	Test Results Grey EPDM Dektite®	Test Results Red Silicone Dektite®
D2240	Shore 'A' Hardness:	60 +/- 5	60	60	60
D412	Tensile Strength (MPa min):	7.0 min	10.5	10.5	8.5
D412	Elongation @ Break (% min):	350 min	650	650	525
D624	Tear Resistance Die C(KN/m min):	20.0 min	31.5	32.0	22.0
	Trouser Tear (KN/m min):	10.0 min	14.0	14.5	12.0
D573	Heat Resistance 70 hrs @ 100°C				
	Change in Hardness (points):	+/- 10	+1	+3	+6
	Change in Tensile (%):	+/- 25	+3.5	-5.0	+9.0
	Change in Elongation (%):	+/- 25	+14.0	-16.0	-9.0
D395	Compression Set 22 hrs @70°C (% max):		14.0	14.5	7.0
D1171	Resistance to Ozone	100ppm No Cracks	Passed	Passed	Passed
D2137	Low Temp. Brittleness (3 mins @ -50°C):	Non-Brittle	Passed	Passed	Passed
U.L.94	Flame Resistance	U.L. 94 h.B.	Passed	Passed	Passed