

The right way to attach almost anything to metal roofs!

S-5![®]

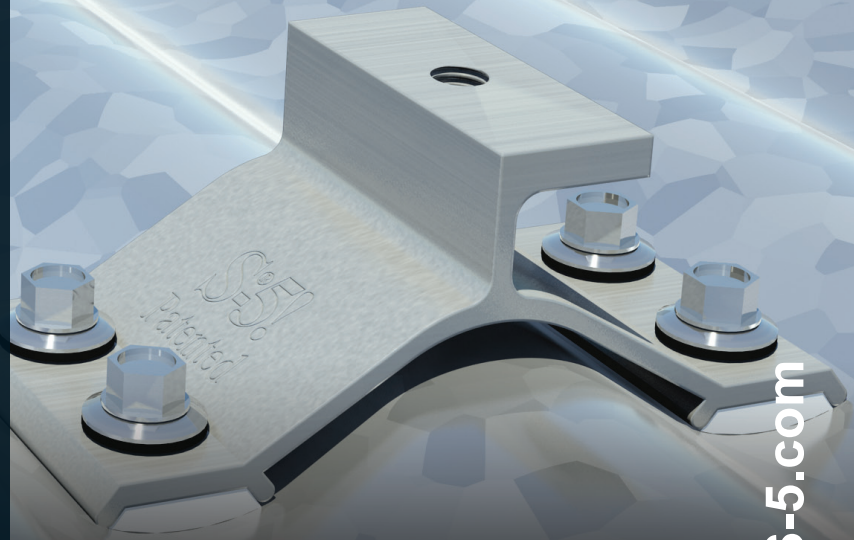
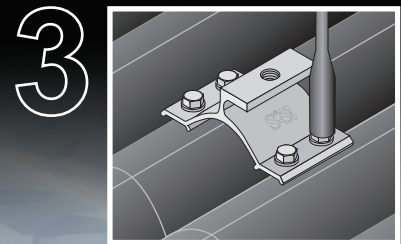
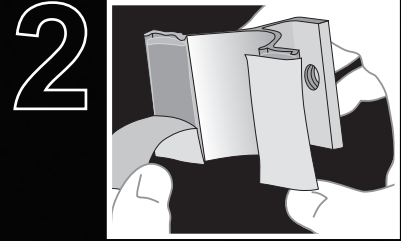
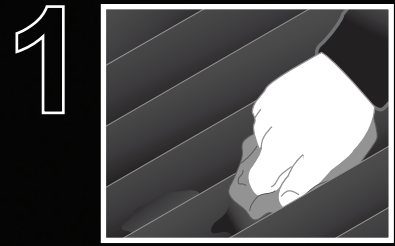
The Right Way!

CorruBracket-AU[™]

CorruBracket-AU[™] is designed specifically for the Australian market and is compatible with 16-18mm corrugated roofing profiles. The CorruBracket-AU comes with factory-applied butyl sealant already in the base, and the S-5![®] patented reservoir conceals the sealant from UV exposure, preventing drying and cracks.

Installation is simple! CorruBracket-AU is mounted directly into the supporting structure of the roof, i.e. roof decking, wood or steel purlins, or trusses. No surface preparation is necessary; simply wipe away excess oils and debris, peel the release paper, align, and apply. Secure through the pre-punched holes using the appropriate screws for the supporting structure. No messy sealants to apply! No chance for leaks!

CorruBracket-AU works with multiple applications, including PV arrays, satellite dishes, signs, banners, and lightning protection. CorruBracket-AU is economical and facilitates quick and easy installation.



S-5![®] CorruBracket-AU[™] is the right way to attach almost anything to 16-18mm corrugated roofing; including PV through DirectAttach[™] or Rail methods.

CorruBracket - AU[™]

888-825-3432 | www.S-5.com

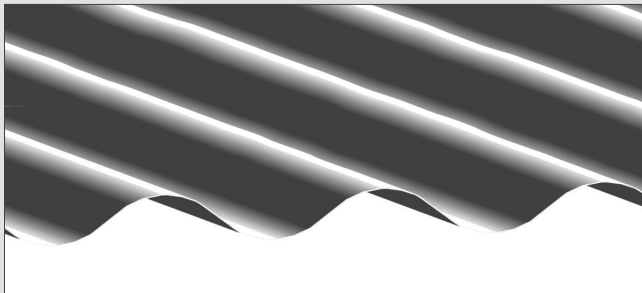


CorruBracket-AU™ is extremely versatile. It can be used for almost any attachment need on 16-18mm corrugated metal roofing. No messy sealants to apply. The factory-applied butyl sealant waterproofs and makes installation a snap!

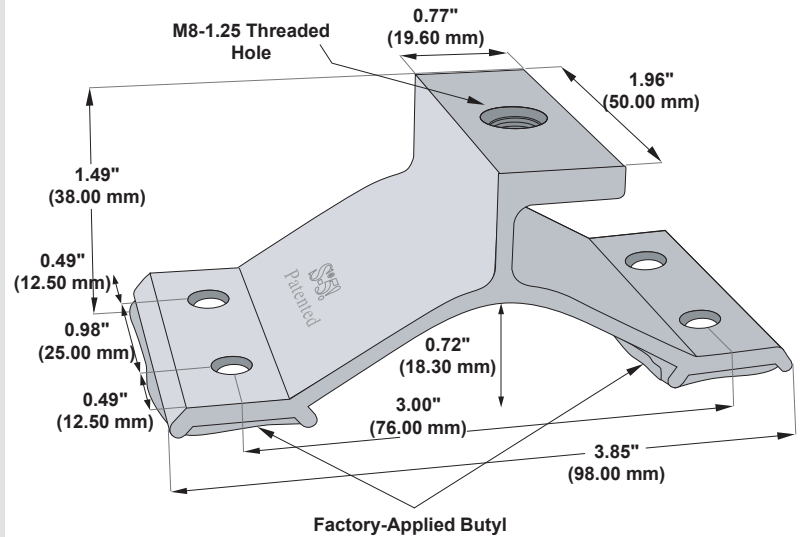
Each **CorruBracket-AU™** comes with factory-applied butyl sealant in the base. CorruBracket-AU is compatible with most common metal roofing materials. For design assistance, ask your distributor, or use our web-based calculator at www.S-5.com for job-specific system engineering and design of your next snow retention project. Also, please visit our website for more information including CAD details, metallurgical compatibilities and specifications.

The CorruBracket-AU has been tested for load-to-failure results on wood decking, and metal and wood purlins. The independent lab test data found at www.S-5.com can be used for load-critical designs and applications. S-5!® holding strength is unmatched in the industry.

Example Profile



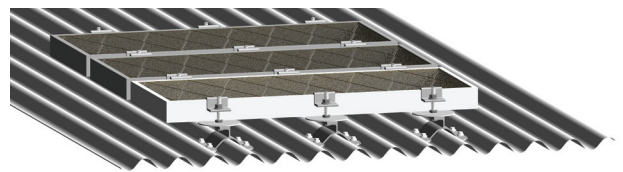
CorruBracket - AU™



Please note: All measurements are rounded to the second decimal place. Contact your distributor for information about hardware requirements.

Example Application

S-5-PV Kit (DirectAttached™ or Rail)



S-5!® Warning! Please use this product responsibly!

Products are protected by multiple U.S. and foreign patents. For published data regarding holding strength, bolt torque, patents and trademarks visit the S-5! website at www.S-5.com.

Copyright 2011, Metal Roof Innovations, Ltd. S-5! products are patent protected. S-5! aggressively protects its patents, trademarks and copyrights.

Distributed by