

Installation Information



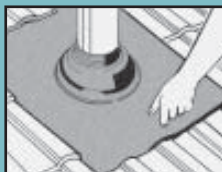
1. Trim the cone to suit pipe size using sharp tin snips.



2. Slide down pipe using water as a lubricant



3. Flatten the lead sheet and then place upper edge of base underneath the tiles, forming an anti-capillary fold.



4. Hand dress the apron for a professional finish.

EASY SELECTION GUIDE

Code No	Pipe External		Sheet Size		Pitch	Colours
DNL100B	0-35mm	0 - 1¼"	410 x 490mm	16 x 19"	0-40° or 10/12	Black (EPDM)*
DNL101B	12-70mm	½ - 2¾"	410 x 490mm	16 x 19"	0-40° or 10/12	
DNL102B	50-70mm	2 - 2¾"	450 x 600mm	18 x 24"	0-40° or 10/12	
DNL103B	50-170mm	2 - 6¾"	450 x 600mm	18 x 24"	0-40° or 10/12	
DNL108B	175-330mm	7 - 13"	550 x 850mm	22 x 34"	0-40° or 10/12	Red Silicone*
DNL200RE	0-35mm	0 - 1¼"	410 x 490mm	16 x 19"	0-40° or 10/12	
DNL201RE	12-70mm	½ - 2¾"	410 x 490mm	16 x 19"	0-40° or 10/12	
DNL202RE	50-70mm	2 - 2¾"	450 x 600mm	18 x 24"	0-40° or 10/12	
DNL203RE	50-170mm	2 - 6¾"	450 x 600mm	18 x 24"	0-40° or 10/12	
DNL208RE	175-330mm	7 - 13"	550 x 850mm	22 x 34"	0-40° or 10/12	

Available in Black EPDM or Red Silicone with the lead grey base

EPDM will withstand constant temperatures at the roofline of -50°C (-122°F) to 115°C (239°F) & up to 150°C (302°F) intermittently.

Red Silicone will withstand constant temperatures at the roofline of -50°C (-122°F) to 200°C (392°F) & up to 250°C (482°F) intermittently.

For higher temperatures always use the Dektite Silicone range go to www.deks.com.au for more information on the full range.

Performance

Dektite Nu-Lead features a Thermo-Baked Acrylic Primer coating, which prevents leaching of lead oxides. This stops corrosion and staining and makes handling much safer.

Nu-Lead has been extensively tested under extreme exposure conditions and conforms to AS1804-1976. As a primer coating, Nu-Lead is easily painted to match any roof colour using conventional acrylic paint.