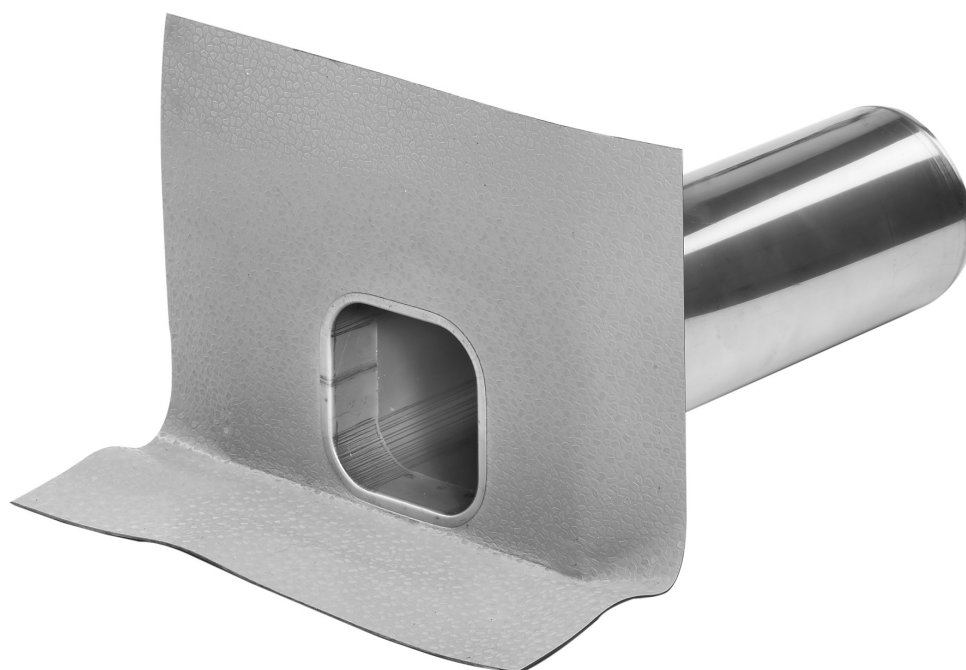


JUAL Foil/steel horizontal roof outlet



Application:

Drainage of roof areas with horizontal drain pipes through wall parapets and with synthetic roofing foils.

Material:

Membrane: The type of the integrated foil membrane can be specified for each specific project.

Pipe: Stainless steel

Flange: PVC/CPE coated steel sheet

Type		Ø (mm)	250 mm pipe	400 mm pipe	600 mm pipe
JUAL FS	40 x 40 mm	50 mm	(72050H)	(72050-400H)	(72050-600H)
JUAL FS	63 x 63 mm	75 mm	(72075H)	(72075-400H)	(72075-600H)
JUAL PS	78 x 78 mm	90 mm	(72090H)	(72090-400H)	(72090-600H)
JUAL FS	95 x 95 mm	110 mm	(72110H)	(72110-400H)	(72110-600H)

