

S-5![®]

The Right Way!

Installation Instructions

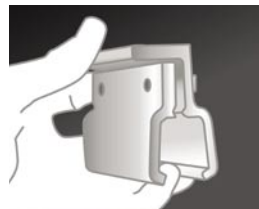
The S-5-K and S-5-R are made for Klip Rib and batten seam profiles. Mate the clamp halves and start the M8 bolts. Thread bolt until bolt end is just flush with the outside surface of the straight (unflanged) side. Place clamp assembly over the seam and force down until clamp snaps over seam. Position clamp appropriately on seam, then close clamp using a locking C-clamp.

Using a hand ratchet or electric tool (13mm), tighten M8 bolts by alternating back and forth between bolts until clamp is closed completely. Remove locking C-clamp.

Consult the S-5![®] website at www.S-5.com for published data regarding holding strength.

S-5! Warning! Please use these products responsibly! Visit our website or contact your S-5! distributor for detailed installation instructions and load test results. The user and/or the installer of these parts is responsible for all necessary engineering and design for the intended use of these parts in an assembly or application.

1



2



3



4



S-5-K and S-5-R Clamps

Copyright 2010, Metal Roof Innovations, Ltd. S-5![®] products are patented by Metal Roof Innovations, Ltd. Version 091710

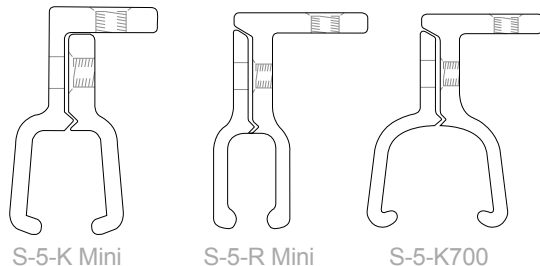
Attach almost anything to standing seam metal roofs
without piercing the panel!

888-825-3432

www.S-5.com

S-5!®

The Right Way!



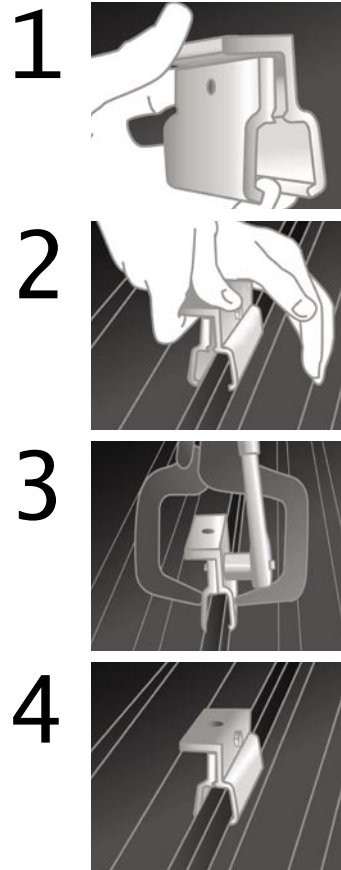
Installation Instructions

The S-5-K Mini, S-5-R Mini, and S-5-K700 are made for Klip Rib, Rib Roof, Lysaght Klip-Lok 700 Hi-Strength®, and similar seam profiles. Mate the clamp halves and start the M8 bolts. Thread bolt until bolt end is just flush with the outside surface of the opposite side of the clamp. Place clamp assembly over the seam and force down until clamp snaps over seam. Position clamp appropriately on seam, then close clamp using a locking C-clamp.

Using a hand ratchet or electric tool (13mm), tighten M8 bolt until clamp is closed completely. Remove locking C-clamp.

Consult the S-5!® website at www.S-5.com for published data regarding holding strength.

S-5! Warning! Please use these products responsibly! Visit our website or contact your S-5! distributor for detailed installation instructions and load test results. The user and/or the installer of these parts is responsible for all necessary engineering and design for the intended use of these parts in an assembly or application.



S-5-K Mini, S-5-R Mini, S-5-K700 Clamps

Copyright 2010, Metal Roof Innovations, Ltd. S-5!® products are patented by Metal Roof Innovations, Ltd. Version 091710

Attach almost anything to standing seam metal roofs
without piercing the panel!

888-825-3432

www.S-5.com